



**1 Bed  
Flat  
located in No 1 Street**





111 Warehouse Court  
No 1 Street  
London  
SE18 6FD



1



1



1



B

£1,725 PCM

We are delighted to offer this beautifully presented one-bedroom furnished apartment, ideally located within the highly sought-after Royal Arsenal Riverside development. This vibrant riverside community boasts a wealth of on-site amenities including a supermarket, pharmacy, GP surgery, bakery, and more – everything you need right on your doorstep.

The property benefits from access to a stunning residents' courtyard garden, perfect for relaxing, or you can enjoy serene garden views from your own private balcony. With excellent transport links just moments away — including the Elizabeth Line, DLR, National Rail, and bus services — this home is a commuter's dream.

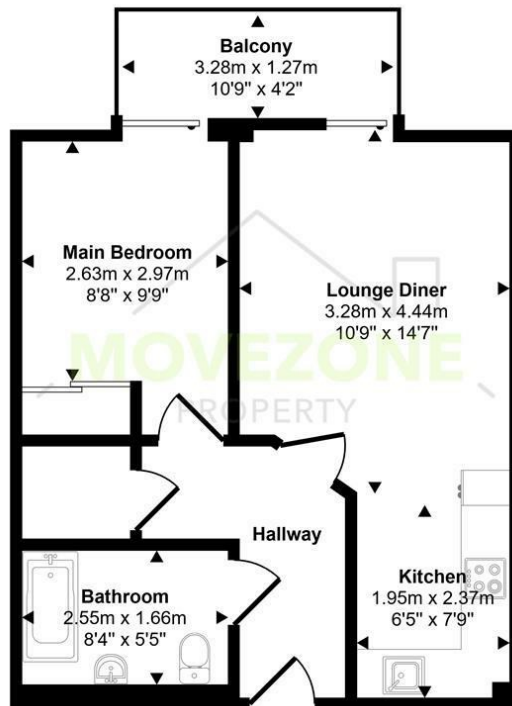
This attractive property features a spacious reception room with a sleek, open-plan modern kitchen—ideal for both everyday living and entertaining. The bright double bedroom provides a comfortable and inviting space, while the stylish three-piece bathroom is finished with contemporary fittings. A private balcony overlooks beautifully landscaped courtyard, offering a peaceful outdoor escape.

Contingency Deposit: £1,990  
EPC Rating: B  
Council Tax Band: B

This is a fantastic property to rent for anyone seeking a stylish and convenient riverside lifestyle.

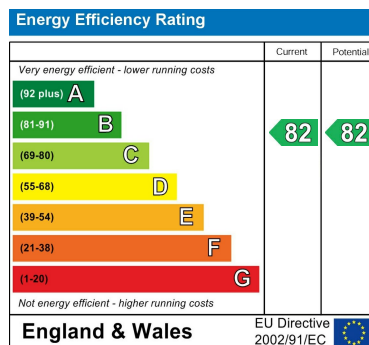


Approx Gross Internal Area  
42 sq m / 455 sq ft



Floorplan

This floorplan is only for illustrative purposes and is not to scale. Measurements of rooms, doors, windows, and any items are approximate and no responsibility is taken for any error, omission or mis-statement. Icons of items such as bathroom suites are representations only and may not look like the real items. Made with Made Snappy 360.



## DIRECTIONS

## CONTACT

223 Southborough Lane  
Bromley  
Kent  
BR2 8AT

E: [info@movezone.co.uk](mailto:info@movezone.co.uk)

T: 0208 3139075

<https://www.movezone.co.uk>

